



# Tulevikutrendid ja poliitilised suunad Euroopas

METSANDUSE  
VISIOONIKONVERENTS &  
METSASEKTORI TUNNUSTAMINE

Maja Drča, PEFC International

23 April 2025

# PEFC - Programme for the Endorsement of Forest Certification

## PEFC Collective strength for the largest scale of certified area and material

- Global, not-for-profit, non-governmental organization
- Alliance of national forest certification systems
- Founded in 1999 in response to smallholders' requirements
- We set international standards and endorse national forest certification systems



- PEFC members with endorsed systems
- PEFC members progressing toward endorsement
- Russia & Belarus
- Countries where chain of custody certificates have been issued

Source: PEFC data March 2024

Over **297\*** million hectares PEFC-certified  
= **76%** of global certified forests  
from endorsed systems stretched over  
**46** countries (**25%** of the world's  
production forests)

Traceability  
through nearly  
**30,000** PEFC-  
certified  
participants  
in **80+** countries





# Sustainable forest management promoted through third-party forest certification

## From sustainably managed forests to end-products

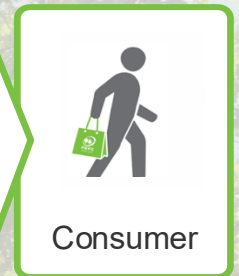


Forests

### Sustainable forest management certification

#### PROVIDES

- Healthy forests ecosystems (e.g., biodiversity, carbon)
- Healthy workers (e.g., safety, training)
- Healthy communities (e.g., indigenous people rights)
- Healthy local economy (e.g., jobs, income)



### Chain of custody certification

#### PROVIDES

- Assurance of origin from sustainably managed forests
- Legal compliance
- Independently audited traceability from forests to consumers
- Covering requirements on health, safety and labour issues



# Who develops PEFC standards?

At global and local level



**Market drivers**

+



**Stakeholders**  
(UN Agenda 21)

=



**Standard Setter**  
Convener  
Coordinator  
Facilitator

# **EU political & policy dimension impacting our daily businesses**



# The EU Green Deal (2019-2024)

## Aims:

- EU to become **climate neutral by 2050**
- **Halt and reverse biodiversity loss** by 2030
- **Cut pollution** to protect people, animals and plants
- Help companies to become leaders in **clean products and technologies**
- Ensuring a **just and inclusive transition**



# EU Forest Strategy for 2030



## Protect and restore our forests by

- Strictly protecting remaining **EU primary and old-growth forests**
- Establishing legally binding **nature restoration targets** for forests
- **Planting 3 billion** additional trees by 2030
- Creating **payment schemes** for forest owners and managers for the **provision of ecosystem services**



## Ensure that forests are managed sustainably by

- Encouraging the **bio-economy** sector to embrace sustainable principles
- Promoting the uptake of **sustainably harvested wood** in the **construction sector**
- Promoting win-win measures for all in **sustainable forest management**



## Understand what is happening in our forests by

- Improving the **monitoring of the state of EU forests** including through better remote sensing
- Ensuring Member States develop **Strategic Plans** for their forests
- Encouraging **citizen involvement** through Map-My-Tree, to keep track of the **3 billion trees** roadmap
- Creating an inclusive space for **all stakeholders to discuss**



# The EU's role in forest-related matters

- The EU does not have an explicit, common forestry policy - forestry remains **largely a national competence**
- EU's important role through:
  - Shared competence in areas that affect forests: environment, climate action, agriculture & rural development and trade
  - Supporting competence in areas that support, coordinate, or supplement national policies: afforestation, reforestation, and forest resilience, research, best practices



# The EU's role in forest-related matters

Debates in connection with various initiatives:

## EU BIODIVERSITY STRATEGY

- Protect at least 30% of EU land and sea by 2030
- Restore degraded ecosystems
- Promote sustainable agriculture and forestry

## EU FOREST STRATEGY

- Strengthen Forest Protection and Restoration
- Promote Sustainable Forest Management (SFM)
- Improve Monitoring, Data, and Governance
- Strengthen Forests' Role in Climate Action

## NATURE RESTORATION LAW

- Legally Binding Nature Restoration Targets (at least 20% of the EU's land and sea areas by 2030)
- National Restoration Plans & Monitoring

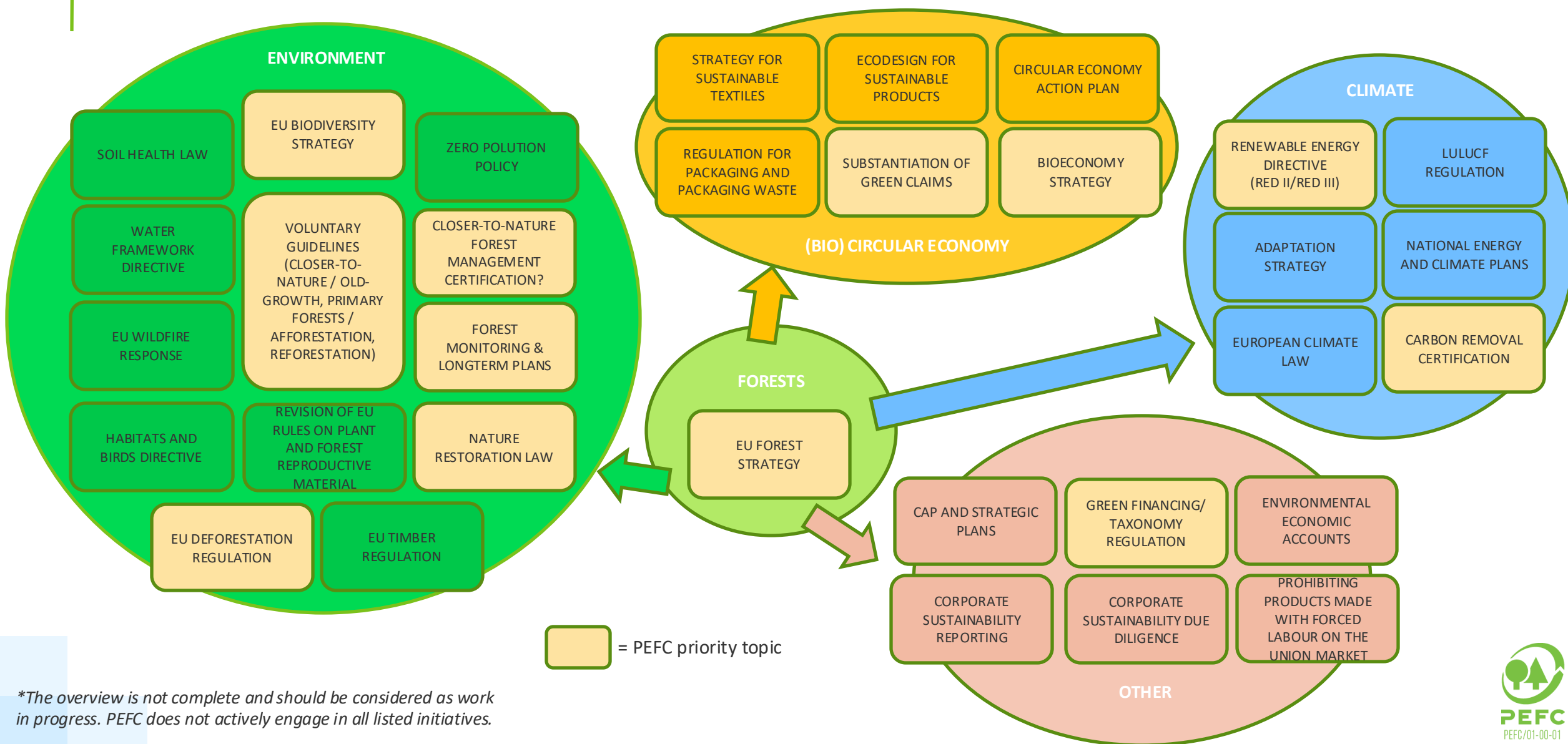
## FOREST MONITORING (proposal)

- Create a Common EU Forest Monitoring Framework
- Develop National Strategic Forest Plans

## CLOSER-TO-NATURE FOREST MANAGEMENT

- Voluntary, guiding approach for Enhancing Biodiversity in Managed Forests
- Minimise Intensive Interventions

# Green Deal: Overview of forest-based EU legislation





# Key sustainability frameworks 2024-2029

**Clean Industrial Deal**

**Vision for Agriculture and Food**

**European Biotech Act**

**New Circular Economy Act**

**90% emission-reduction target for 2040**

**New EU definition of small midcap companies**

**Omnibus - simplified rules on sustainability and EU investments**

## And forests?

Forests and forestry not specifically addressed in the new program:

- Development of EU's biotechnology, supported by AI and digital tools
- Protection of forests and woodlands
- Fight against forest fires
- Bioeconomy strategy

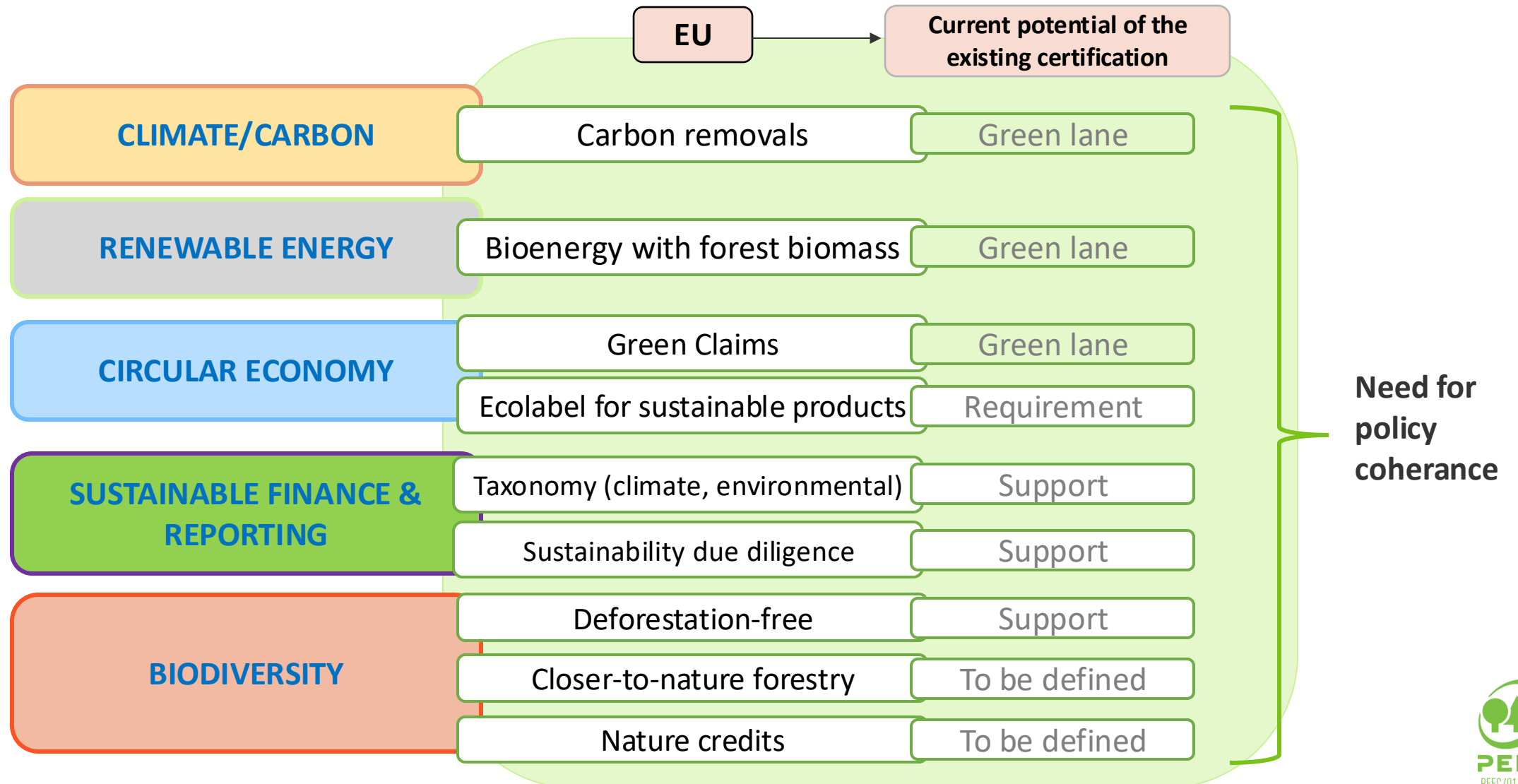
**Continued implementation of the European Green Deal**



# The added value of forest certification in meeting the EU regulatory compliance



# PEFC focus: securing optimal role for forest certification in EU legislation



# Overarching PEFC EUDR solution

## Tool 1: PEFC SFM aligned requirements

- Revised deforestation-free definitions



## Tool 2: PEFC EUDR DDS module

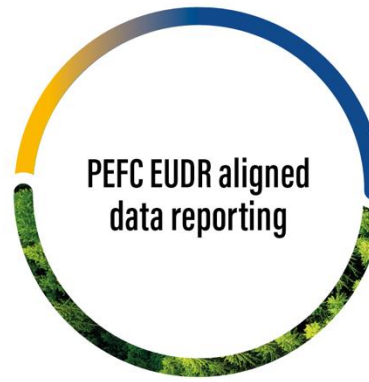
- Simplified implementation and compliance



Enabling  
data  
transfers

## Tool 4: PEFC Technology partners

- Easy and secure geolocation and data sharing



PEFC EUDR trained  
and accredited  
certification bodies

## Tool 3: PEFC EUDR training and accreditation programme

- Independent 3rd party audits





EUDR Online Registry  
(EC database)



## BENEFITS

- ✓ PEFC chain of custody optional module: Simplified implementation through familiar processes
- ✓ Mirrors EUDR
- ✓ Streamlined data management
- ✓ Secure data sharing supported by technology partners:

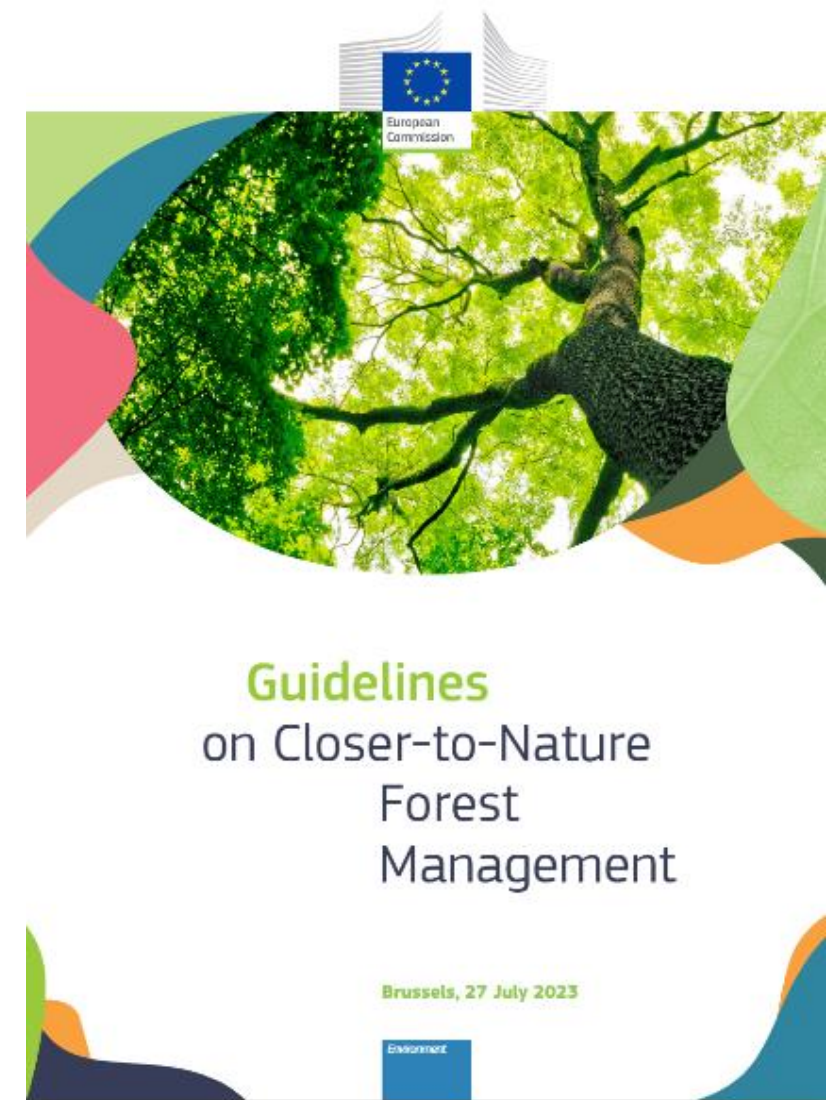
LiveEC  osapiens  TimberID

- ✓ EUDR-aligned deforestation-free sustainable forestry requirements
- ✓ Audited by PEFC EUDR trained certification body auditors



# New EU forest management label? Closer-to-Nature

- Under discussion: EU voluntary certification for Closer-to-Nature Forestry
  - Bringing in more biodiversity requirements, with quantifiable data
  - EU Study assessing existing schemes and suggesting policy options
  - Link between existing and emerging certification schemes (labels, credit schemes, bonds, etc)
- PEFC has been calling on the EC to:
  - Collaborate with the existing certification schemes that provide a holistic approach
  - Acknowledge their role and continuous improvements and developments
  - Assess the impact, added value and benefits of any new potential system at EU level



# PEFC RED II recognised scheme transitioning to RED III (Renewable Energy Directive)

 **PEFC**  
PEFC/01-00-01 | PEFC ST 5002

**Additional requirements for organisations sourcing forest biomass – RED II**



**PEFC RED II  
STANDARD**

**PEFC Council**  
ROC Building C1  
Route de Pré-Dela 20  
1205 Geneva 15  
Switzerland  
t +41 22 799 45 40  
f +41 22 799 45 50  
e info@pefc.org  
www.pefc.org


 **PEFC**  
PEFC/01-00-01 | PEFC ST 5003

**Additional requirements for certification bodies providing certification against PEFC ST 5002 – RED II**




**PEFC RED II  
STANDARD**

**PEFC Council**  
ROC Building C1  
Route de Pré-Dela 20  
1205 Geneva 15  
Switzerland  
t +41 22 799 45 40  
f +41 22 799 45 50  
e info@pefc.org  
www.pefc.org

 **PEFC**  
PEFC/01-00-01 | PEFC ST 5004

**Requirements for the Development of Level A Risk Assessments and its Recognition by PEFC as per Article 29 (6a) and (7a) of the RED II Directive**



**PEFC RED II  
STANDARD**

**PEFC Council**  
ROC Building C1  
Route de Pré-Dela 20  
1205 Geneva 15  
Switzerland  
t +41 22 799 45 40  
f +41 22 799 45 50  
e info@pefc.org  
www.pefc.org

# PEFC: Your Partner in Responsible Green Claims

- **EU Green Claims** under way – EU's new legislation to:
  - Helps consumers make sustainable choices.
  - Protects against “greenwashing” (misleading or unverified claims, e.g. “100% forest-friendly” without evidence)
- **Legal Compliance:** The EU Green Claims Directive will mandate accurate, independently verified claims. Non-compliance could lead to penalties and reputational damage
- Through the usage of the PEFC label, PEFC certificate holders will comply with the requirements of the EU Green Claims:
  - **Globally Recognised Label:** The PEFC label guarantees sustainable sourcing through rigorous certification and traceability standards
  - **Transparent and Reliable:** PEFC certifications are independently verified by ISO-accredited bodies, ensuring credibility







# Thank you for your attention.

PEFC EU OFFICE in Brussels  
**Maja Drča**, EU Representative  
([maja.drca@pefc.org](mailto:maja.drca@pefc.org))

